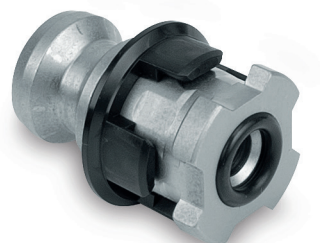
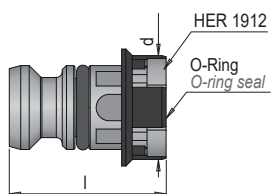





DESCRIZIONE DEL PRODOTTO

- » Adatto per il serraggio di portaelettrodi nel mandrino a serraggio rapido HER 3534
- » Con foro di lavaggio



MATERIALE

- » 1.2083

d	l	 Pz. / UDC	N°	EUR
25,5	37	1	HER 1912/ 1	<>
25,5	37	12	HER 1912/12	<>
25,5	37	50	HER 1912/50	<>