

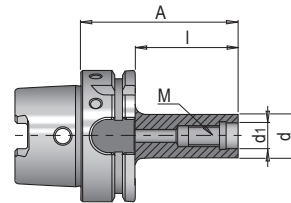
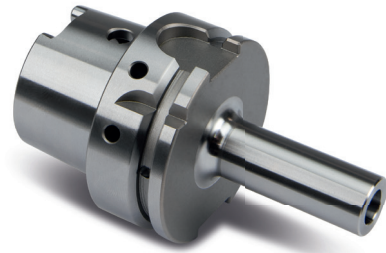


PRODUCT DESCRIPTION

- » Optimal running smoothness due to hard turned shanks
- » Hard reworked puller grooves, HSK shoulder and HSK ejection surface
- » Cylindrical design
- » With Balluff chip hole

APPLICATION

- » For clamping screw-in milling cutters



A	d	d1	Interface	M	I	No.	EUR
51	10	6.5	HSK-A 63	M6	25	HWZ 1149/HSK-A 63/ 6/ 25	<>
76	13	8.5	HSK-A 63	M8	50	HWZ 1149/HSK-A 63/ 8/ 50	<>
101	13	8.5	HSK-A 63	M8	75	HWZ 1149/HSK-A 63/ 8/ 75	<>
76	18	10.5	HSK-A 63	M10	50	HWZ 1149/HSK-A 63/10/ 50	<>
101	18	10.5	HSK-A 63	M10	75	HWZ 1149/HSK-A 63/10/ 75	<>
76	21	12.5	HSK-A 63	M12	50	HWZ 1149/HSK-A 63/12/ 50	<>
101	21	12.5	HSK-A 63	M12	75	HWZ 1149/HSK-A 63/12/ 75	<>
76	29	17	HSK-A 63	M16	50	HWZ 1149/HSK-A 63/16/ 50	<>
126	29	17	HSK-A 63	M16	100	HWZ 1149/HSK-A 63/16/100	<>