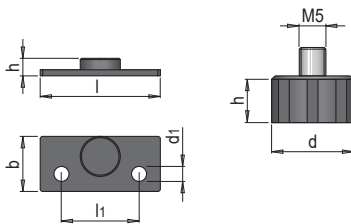




**PRODUKTBESCHREIBUNG**

» Passend zu allen ITS Elektrodenhaltern mit Chipvorbereitung



Typ	b	h	d1	l1	l	d	Nr.	EUR
	-	12	-	-	-	<b>16</b>	HER 1850/16	<>
	22	7	6	<b>31</b>	48	-	HER 1850/31	<>