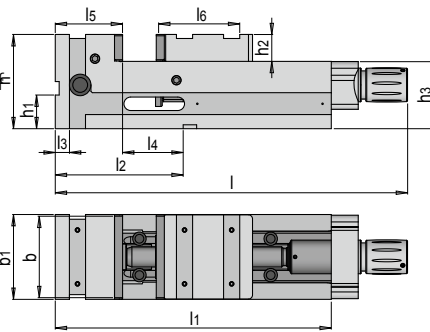


### PRODUCT DESCRIPTION

- » Version R with regulator for presetting the clamping force
- » All surfaces ground with a parallelism of 0.02 mm, therefore ideal for horizontal and vertical machining
- » Compact and stable monoblock body from GGG-70 which maintains its total length
- » Easy to clean through fully enclosed spindle and additional side window
- » Accuracy of 0.01 mm in clamping repeatability



### INCLUDED IN THE DELIVERY

- » HWS 5602 Clamping jaws (2 pcs.)
- » HWS 5660 Clamping shoes (4 Pcs.)
- » HWS 5670 Handle

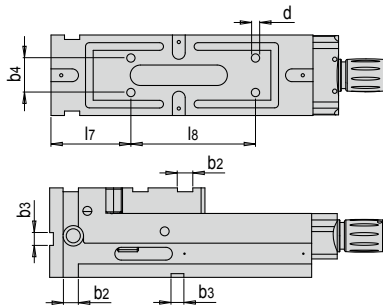
R <sup>1)</sup>	Wt.	b1	h	h1	h2	h3	l	l1	l2	l3	l4	l5	l6	SK <sup>2)</sup>	b	No.	EUR
No	35 kg	126	140	50	40	100	524	410	190	21	90	100	124	40	125	HWS 600/125	<>
Yes	35 kg	126	140	50	40	100	551	410	190	21	90	100	124	40	125	HWS 600R/125	<>
No	70 kg	161	160	60	50	110	679	570	230	21	115	115	127	50	160	HWS 600/160	<>
Yes	70 kg	161	160	60	50	110	706	570	230	21	115	115	127	50	160	HWS 600R/160	<>

1) R: Regulator for presetting the clamping force

2) SK: clamping force [kN]

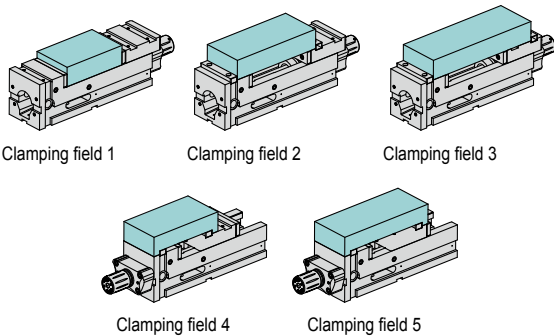
### INSTALLATION EXAMPLE FOR HWS 600 / HWS 600R

- » Mounting with screw hole



No.	b	b2	b3	b4	d	l7	l8
HWS 600/125	125	24	20	54	13	125	195
HWS 600R/125	125	24	20	54	13	125	195
HWS 600/160	160	24	20	68	13	140	300
HWS 600R/160	160	24	20	68	13	140	300

- » Clamping possibilities



SF 1 <sup>1)</sup>	SF 2 <sup>1)</sup>	SF 3 <sup>1)</sup>	SF 4 <sup>1)</sup>	SF 5 <sup>1)</sup>
0-200	80-285	155-355	122-191	192-261
0-200	80-285	155-355	122-191	192-261
0-310	106-416	174-484	165-334	233-402
0-310	106-416	174-484	165-334	233-402

1) Clamping field

For reverse clamping just place the spindle at the rear part of the fixed jaw and fix it with the four screws. The spindle shoe and the moveable jaw must be reversed accordingly.